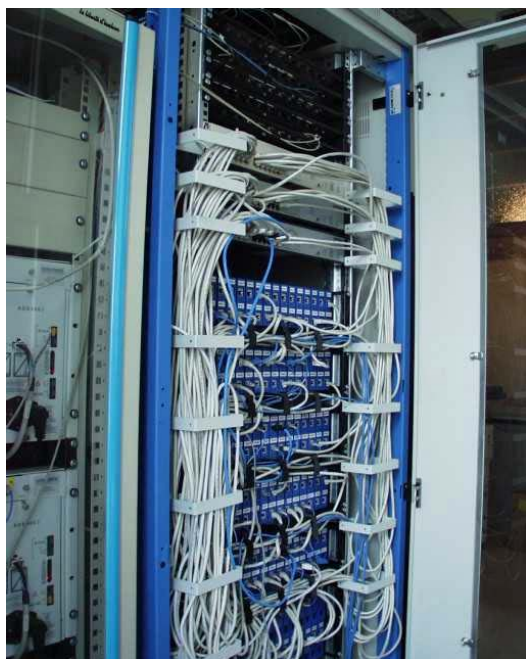


RAILWAYS SYSTEM HEADQUARTERS, SEDE

Class D

1000 points, adaptable Class D



The building is located in the heart of Milano.

The Italian northern railway system is managed from this facility. The entire telecommunication system has been restructured in keeping with the most recent technological trends in order to use the voice on IP concept.

All of these services are very effectively supported by the Merlin Gérin structured prewiring network (category 5e) completed by IBCS switching systems for the telephone facilities.

Each floor has a cross-connect system linked to the general distributor by an optical fiber freeway; the telephone freeway is formed by copper multipair cables.

The network is formed by 8 bays (2000x800x600mm).

In the above picture, note that an 800mm-wide bay provides for easy switching connections using the cable hoops provided on the sides.